

Support Coach

TARGET Foundational Mathematics

Support Coach, Target: Foundational Mathematics, First Edition, Grade 3

545NASE ISBN: 978-1-62928-519-1

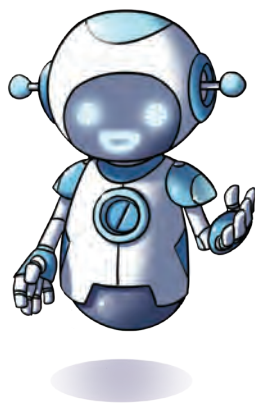
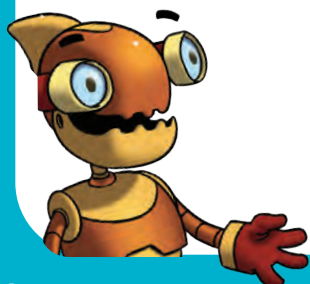
Triumph Learning® 136 Madison Avenue, 7th Floor, New York, NY 10016

© 2014 Triumph Learning, LLC. All rights reserved. No part of this publication may be reproduced in whole or in part, stored in a retrieval system, or transmitted in any form or by any means, electronic, mechanical, photocopying, recording or otherwise, without written permission from the publisher.

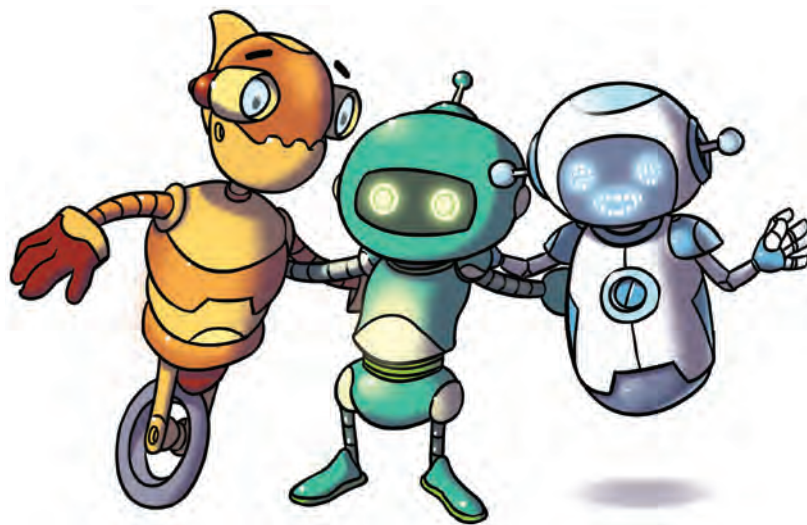
Printed in the United States of America. 10 9 8 7 6 5 4 3 2 1

Contents

Lesson 1	Understanding Unit Fractions	4
Lesson 2	Understanding Fractions	14
Lesson 3	Equivalent Fractions	24
Lesson 4	Comparing Fractions	34
Lesson 5	Adding Whole Numbers	44
Lesson 6	Subtracting Whole Numbers	54
Lesson 7	Understanding Multiplication	64
Lesson 8	Multiplication Facts	74
Lesson 9	Understanding Division	84
Lesson 10	Division Facts	94
Lesson 11	Solving Two-Step Word Problems	104
Lesson 12	Identifying Patterns	114



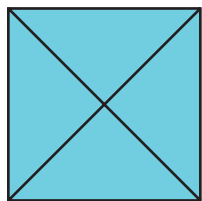
Lesson 13	Telling Time	124
Lesson 14	Problem Solving with Mass and Capacity	134
Lesson 15	Picture Graphs	144
Lesson 16	Bar Graphs	154
Lesson 17	Line Plots	164
Lesson 18	Perimeter	174
Lesson 19	Area of Rectangles	184
Lesson 20	Classifying Shapes	194
Glossary	204
Math Tools	213



Understanding Unit Fractions

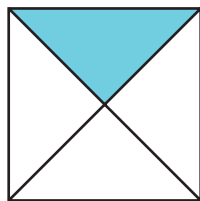
PLUG IN Finding Equal Parts

A whole can be broken into **equal parts**.



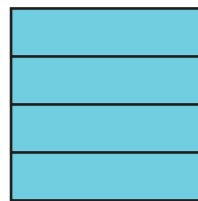
4 fourths

Each part of the square is a part of the whole.



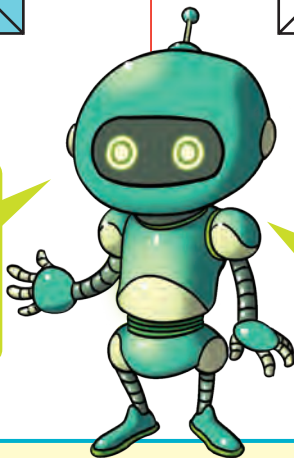
1 fourth

This square also has 4 equal parts.



4 fourths

The whole square is broken into 4 equal parts, or 4 fourths.



Each part is 1 fourth of the whole.

I see! Equal parts of the same whole may not have the same shape.

Words to Know

equal parts
parts that are the same size



DISCUSS

Wes draws a rectangle to show thirds. What does thirds mean?

A You can break a shape into equal parts.

DO

Break the shape into thirds.



- 1 How many parts?
- 2 Are the parts equal? Write *yes* or *no*.
- 3 How many thirds?
- 4 Tell about each part.

 3 parts

equal:

The whole rectangle is equal to thirds.

Each part is third of the whole.

B A shape can be broken into equal parts in more than one way.



- 1 Count equal parts.
- 2 Compare equal parts.



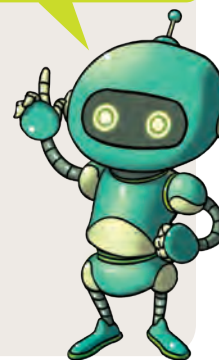
Rectangle A Rectangle B

Rectangle A: 3 equal parts

Rectangle B: equal parts

Are the equal parts in Rectangle A the same as those in Rectangle B?

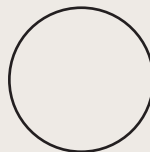
Be careful! Equal parts of the same whole are not always the same.



C You can draw lines to break a shape into equal parts.



- 1 Break the circle into halves.
- 2 How many equal parts?
- 3 Count the halves.
- 4 Tell about each part.



 2 equal parts

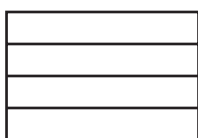
The whole circle is equal to halves.

Each part is half of the whole.

PRACTICE

You can show fourths in different ways.

1



Rectangle A



Rectangle B

Rectangle A: 4 equal parts

Rectangle B: equal parts

Are the equal parts in Rectangle A the same as those in Rectangle B?

Draw lines to break the rectangle into fourths. Then write the answers.

2

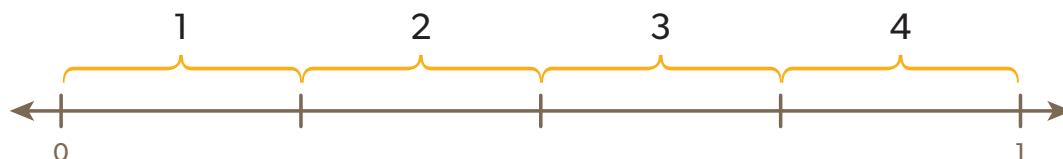


How many equal parts?

The whole rectangle is equal to fourths. Each part is fourth of the whole.

POWER UP

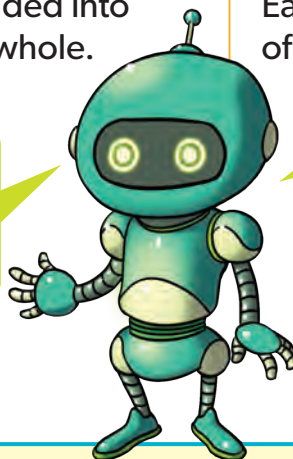
Understanding Fractional Parts of a Number Line



A **number line** can be divided into smaller equal parts of the whole.

Each part of the number line is a part of the whole.

The number line is divided into 4 equal parts, or fourths.

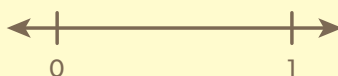


Each part is 1 fourth of the whole.

Words to Know

number line

a line with equally placed tic marks named by numbers



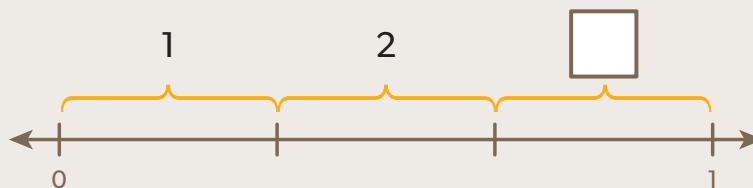
DISCUSS

What does it mean to say a number line is divided into fourths?

A A number line between 0 and 1 can be divided into equal parts.

DO

- 1 Count the equal parts between 0 and 1 on the number line.
- 2 Label each equal part of the number line.
- 3 Count the thirds.
- 4 Tell about each part.



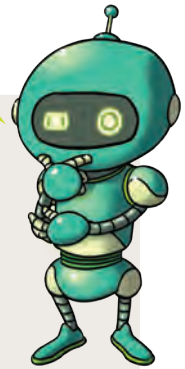
3 equal parts

The whole number line is equal to _____ thirds.

Each part is _____ third of the whole.

B You can divide a number line into equal parts.

A number line can show equal parts of a whole.



DO

1 Divide the number line into halves.



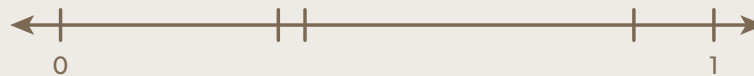
2 How many equal parts? 2 equal parts

3 Count the halves. The whole number line is equal to _____ halves.

4 Tell about each part. Each part is _____ half of the whole.

DISCUSS

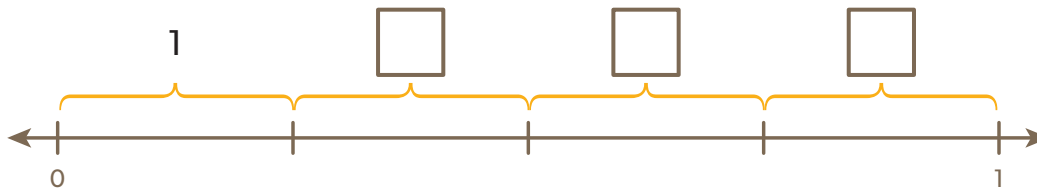
Sophia drew this number line. She says each part of the number line represents one fourth. What can you tell Sophia about her work?



PRACTICE

Answer the question about the number line.

1



How many equal parts? 4

The whole number line is _____ fourths.

Each part is _____ fourth of the whole.

Draw marks to separate the number line into thirds. Then write the answers.

2



How many equal parts? _____

The whole number line is equal to _____ thirds.

Each part is _____ third of the whole.

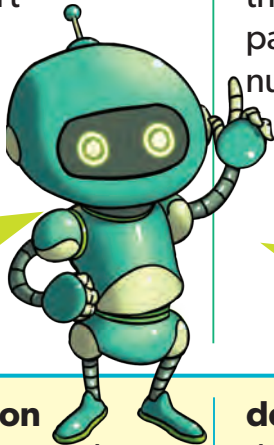
READY TO GO Understanding Unit Fractions



A **unit fraction** names one equal part of a whole.

The **denominator** tells the number of equal parts. It is the bottom number of the fraction.

The **numerator** tells the number of parts you are counting. It is the top number of the fraction.



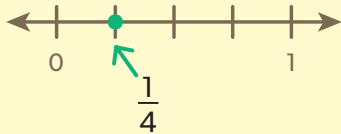
The dot on the number line shows a fraction.

The number line is separated into 4 equal parts. The denominator is 4.

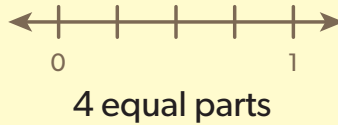
I see! I counted 1 part of the number line. The numerator is 1. So the fraction is $\frac{1}{4}$.

Words to Know

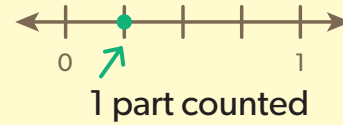
unit fraction
names one equal part of a whole



denominator
the total number of equal parts



numerator
the number of parts being counted



DISCUSS

What does the fraction $\frac{1}{2}$ mean?

LESSON LINK

PLUG IN

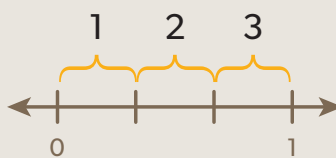
Shapes can be broken into equal parts.



3 equal parts

POWER UP

A number line can be divided into equal parts.



3 thirds

GO!

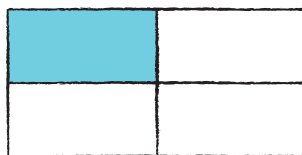
I get it! I can model unit fractions with shapes or number lines.



WORK TOGETHER

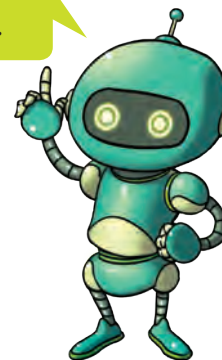
Use rectangles to show fractions.

- This rectangle shows a fraction.
- There are 4 equal parts. 1 part is shaded.
- So the fraction is $\frac{1}{4}$.



$$\frac{1}{4} \leftarrow \begin{array}{l} \text{shaded part} \\ \text{equal parts} \end{array}$$

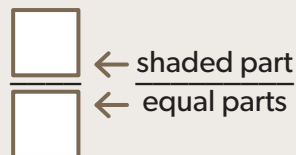
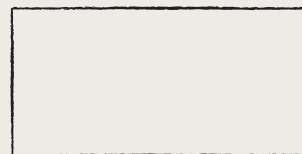
I can draw rectangles to show fractions.



A Model the fraction $\frac{1}{6}$.

DO

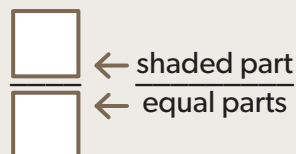
- 1 Draw a rectangle.
- 2 Divide the rectangle into 6 equal parts.
- 3 Shade 1 of the parts.
- 4 Write the unit fraction.



B Model the fraction $\frac{1}{3}$.

DO

- 1 Draw a rectangle.
- 2 Divide the rectangle into 3 equal parts.
- 3 Shade 1 of the parts.
- 4 Write the unit fraction.



DISCUSS

William wants to draw a rectangle to model the fraction $\frac{1}{8}$. He says the 8 parts of his rectangle do not need to be the same size. Is William correct? Explain.

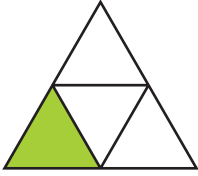
Remember, a fraction names equal parts of a whole.



PRACTICE

Write the fraction for the shaded part of each shape.

1



$$\frac{\square}{4}$$

← shaded part
← equal parts

2



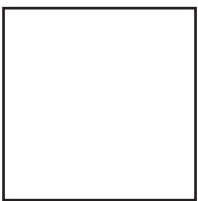
$$\frac{\square}{\square}$$

REMEMBER
The numerator is the number of parts you are counting.

Model each fraction.

3

$\frac{1}{3}$



4

$\frac{1}{8}$



HINT
The denominator is the total number of equal parts.

Write the fraction.



$\frac{1}{\square}$ ← part counted
 ← equal parts

REMEMBER
 Count to find the number of equal parts.



$\frac{\square}{\square}$

Write the fraction.

7 Tyler divides a circle into 3 equal parts. He shades 1 part. What fraction of the circle does Tyler shade?

$\frac{\square}{\square}$
 $\frac{\square}{\square}$
 $\frac{\square}{\square}$
 $\frac{\square}{\square}$

8 Mavis cuts an apple into 4 equal slices. She eats 1 slice. What fraction of the apple does Mavis eat?

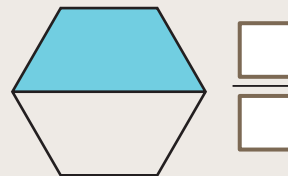
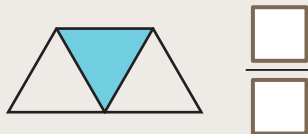
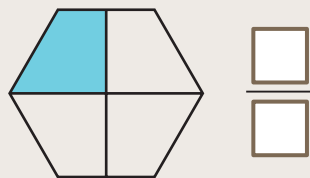
I'm going to make a model by drawing a shape or a number line.



DISCUSS

Model with Mathematics

Kaylee found fractions for some models. Find the missing fractions.



How can a model be used to show a fraction?



PROBLEM SOLVING

PIZZA FRACTIONS

READ

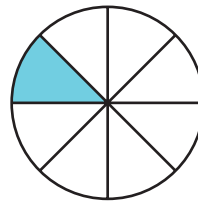
Mr. Hill makes a pizza. He cuts the pizza into 8 equal slices. 1 slice has pepperoni. What fraction of the pizza has pepperoni?

PLAN

- What is the problem asking you to find?
You need to find the fraction of the pizza that has _____.
- What do you need to know to solve the problem?
How many equal slices? _____
How many slices have pepperoni? _____
- How can you show the fraction?
You can use a fraction model or a number line.

SOLVE

Make a model. Write the fraction.
Draw a circle with _____ equal parts.
Shade _____ part.



_____ shaded part _____ equal parts

CHECK

Model the fraction another way. Use a number line.



_____ part counted _____ equal parts

 of the pizza has pepperoni.

PRACTICE

Use the problem-solving steps to help you.

- 1** Chloe cuts a loaf of bread into 8 equal slices. She gives 1 slice to her friend. What fraction of the bread does Chloe give to her friend?

*I remember!
I need to find
equal parts.*

**CHECKLIST**

- READ
- PLAN
- SOLVE
- CHECK

- 2** A graham cracker has 6 equal pieces. Matthew eats 1 piece. What fraction of the graham cracker does he eat?

CHECKLIST

- READ
- PLAN
- SOLVE
- CHECK

- 3** Kuri divides her paper into 4 equal sections. Then she makes 1 section red. What fraction of the paper is colored red?

CHECKLIST

- READ
- PLAN
- SOLVE
- CHECK