



Grades K-8

MTSS 

# EPS Reading Assistant

EPS Reading Assistant, an AI-driven tutor, is designed to provide students with adaptive reading practice and intervention to deliver rapid results. Using voice-recognition technology, students read out loud while an avatar, Amira, assesses and delivers real-time personalized feedback and micro-interventions. By capturing these key data points, educators are empowered with valuable insights into each student's reading skill progress and mastery. When implemented with fidelity, this is a powerful tool for accelerating reading outcomes.

## EPS Reading Assistant is the first intelligent AI-driven reading tutor



# EPS Reading Assistant Advantages

## Unlimited Practice and Intervention

Students work independently with the program, benefiting from real-time feedback and micro-interventions to further reading gains.

## Comprehensive Reading Assessment

Reduce educator effort and wait time for results with a reading assessment platform that covers universal screening, dyslexia identification, benchmarking, progress monitoring and placement.

## Robust Reporting

A robust suite of reports and dashboards for educators and administrators — delivered in a unified, simple interface — pinpoints specific reading skill strengths and deficits.

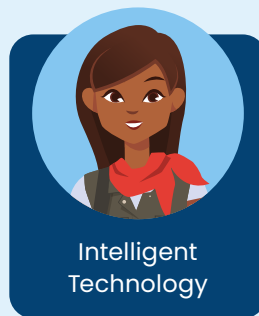
## More Time to Teach

A digital reading assistant lets educators spend more focused time with each student and small groups by offering personalized reading practice.

## Bilingual Support

Available in English and Spanish to cater to diverse language needs.

**EPS Reading Assistant marries the science of reading with the world's most innovative technology to deliver rapid results.**



The technology underpinning EPS Reading Assistant received **Tier 1 ESSA rating** and the first ever **CODiE award for Best Science of Reading Skills Solution (2023)**.



**//CODiE//**  
SIIA CODiE AWARDS

**Reach out to your Account Executive to learn more about EPS Reading Assistant.**

[epslearning.com](https://epslearning.com) | 800.225.5750

